

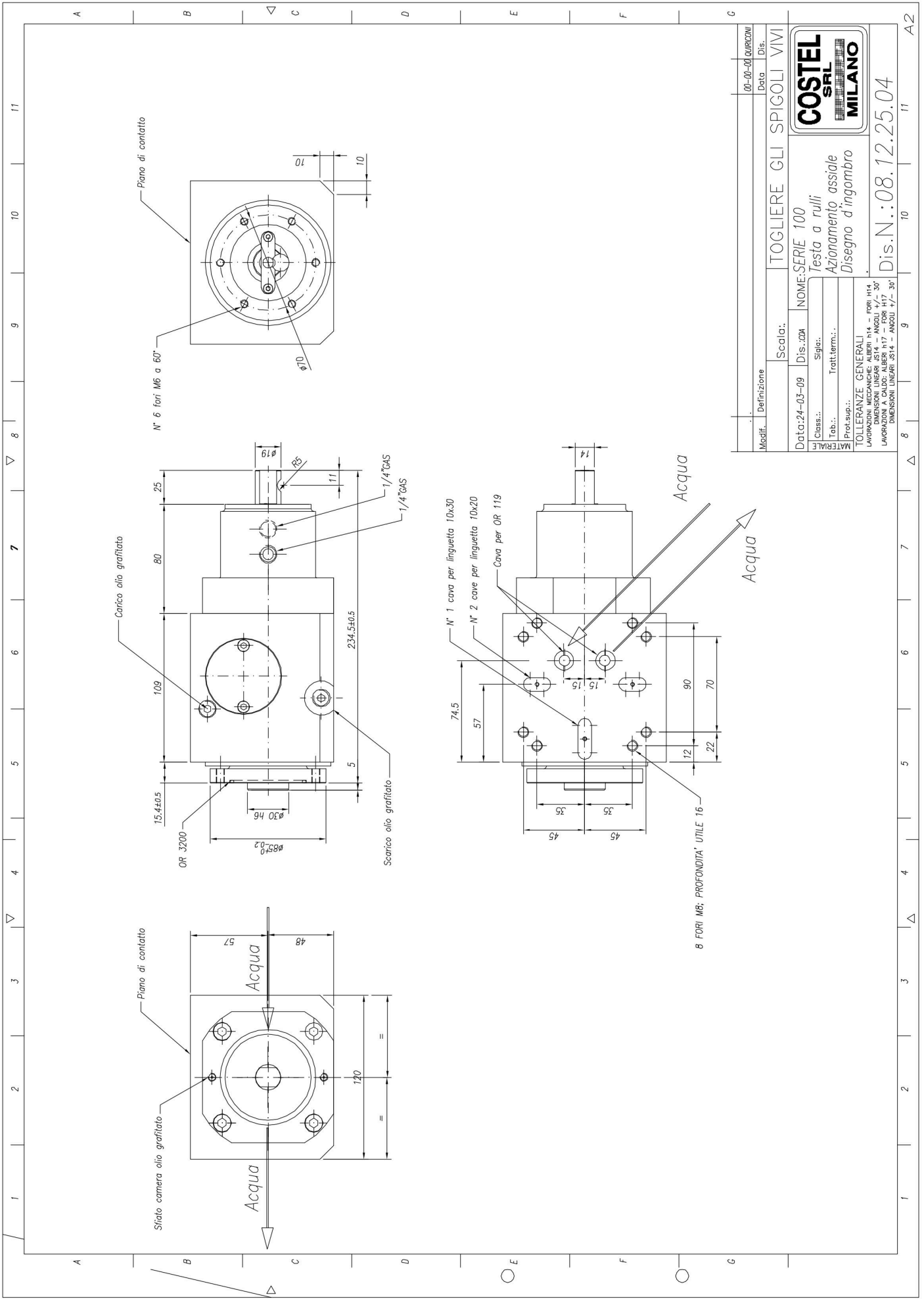
## HEADS AND ARMS FOR SEAM WELDERS

HEADS AND ARMS FOR SEAM WELDERS			
	SIZE 100	SIZE 200	<p style="text-align: center;"><b>Main features:</b></p> <ul style="list-style-type: none"> <li>Strong frame of copper and stainless steel.</li> <li>Conductor contacts of high thickness silver.</li> <li>Hard copper alloy wheel-holding axle.</li> <li>Suitable for operating in any position, under water jet, with axial thrust.</li> <li>Long life and minimum maintenance.</li> </ul>
Welding heads			
IDLE HEAD	<a href="#">TR 100/F DWG</a>	<a href="#">TR 200/F DWG</a>	
OPERATED HEAD	<a href="#">TR 100/A DWG</a>	<a href="#">TR 200/A DWG</a>	
90° OPERATED HEAD	<a href="#">TR 100/AL DWG</a>	<a href="#">TR 200/AL DWG</a>	
Welding arms			<p style="text-align: center;"><b>On Request:</b></p> <p>Special heads and arms:</p> <ul style="list-style-type: none"> <li>For very high currents up to 50 KA.</li> <li>For very high thrusts.</li> <li>With reduced sizes.</li> <li>For welding small thicknesses.</li> <li>With front cooling.</li> <li>With silver bushes.</li> </ul>
IDLE ARM	BR 100/F	BR 200/F	
OPERATED ARM	BR 100/A	BR 200/A	
90° IDLE ARM	BR 100/FL	BR 200/FL	
	Max current capacity KA 20	Max current capacity KA 35	
	Max effort on welding wheel da N 730	Max effort on welding wheel da N 1200	<p style="text-align: center;"><b>Other components for seam welding:</b></p> <ul style="list-style-type: none"> <li>Profile and knurling tools.</li> <li>Grooved shafts with joints.</li> <li>Shunts.</li> <li>Transformers.</li> <li>Welding controls</li> <li>Welding wheels for mild or stainless steel.</li> <li>Extensions of wheel holding axle.</li> </ul>



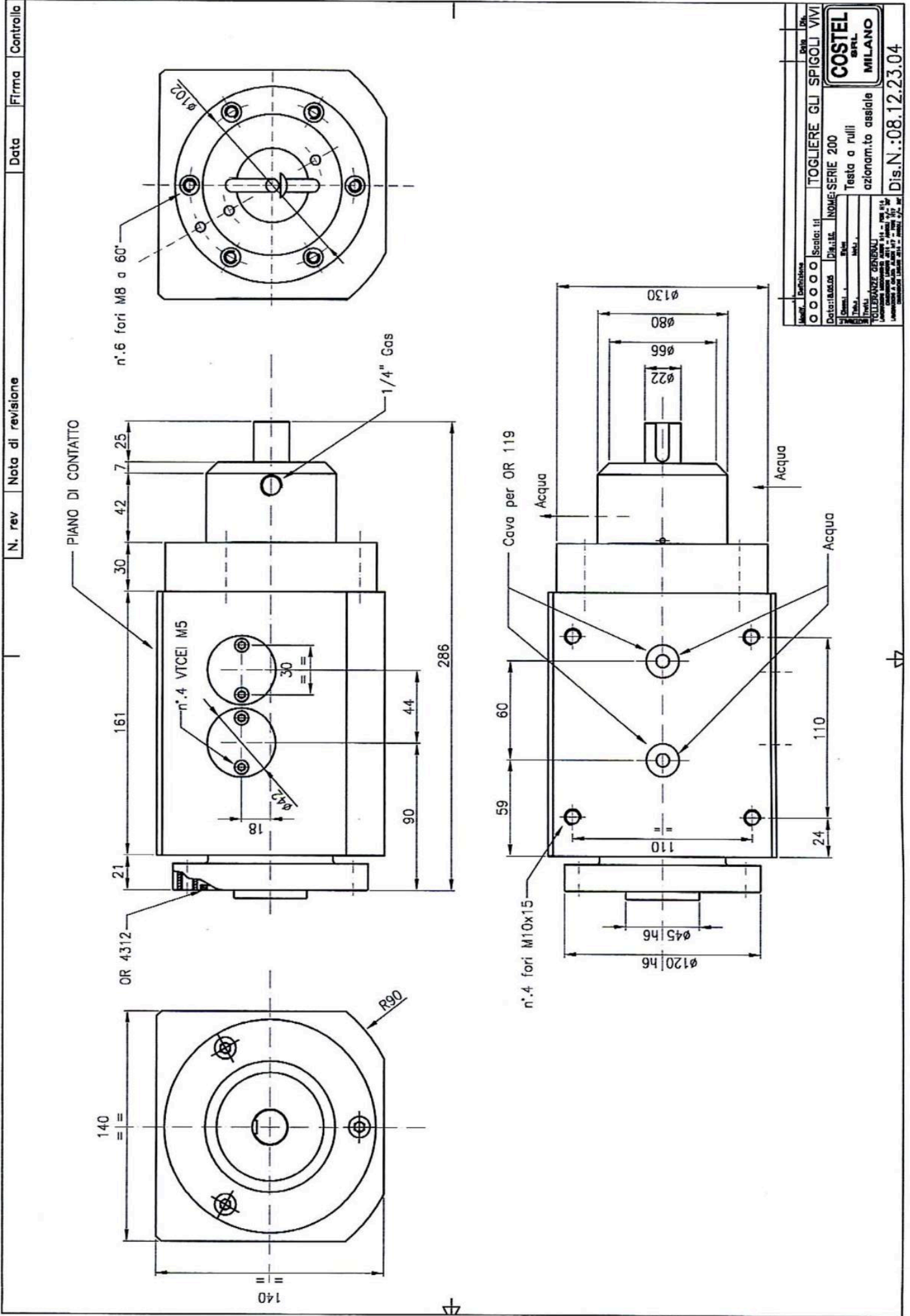


# Axial Drive Head TR 100/A



Modif.:	Definizione	Scala:	TOGLIERE GLI SPIGOLI VMI
	00-00-00 QUORCOW	Data:	Dis.
Date:	24-03-09	Dis.:004	NOME:SERIE 100
Class.:		Segn.:	Festa a rulli
Tab.:		Tratt:term.:	Azionamento assiale
Proct.sup.:			Disegno d'ingombro
TOLLERANZE GENERALI			
LAVORAZIONI MECCANICHE: ALBERI h14 - FORI h14 - ANGOLI R1			
LAVORAZIONI A CALDO: ALBERI h17 - FORI h17 - ANGOLI R1			
DIMENSIONI LINEARI ±0.14 - ANGOLI +/- 30°			
			Dis.N.:08.12.25.04

Axial Drive Head TR 200/A



N. rev	Nota di revisione	Data	Firma	Controlla
--------	-------------------	------	-------	-----------

Mod.	Definitiva	Dis. DR.
0000	Scalor. II	TOGLIERE GLI SPIGOLI VIVI
Dati: 1/2/05	Dis. 1/15	INOME: SERIE 200
Dis. 1/15	Dis. 1/15	Testa a rulli
Dis. 1/15	Dis. 1/15	azionam.to assiale
<b>COSTEL</b> SRL MILANO		
Dis. N.: 08.12.23.04		



